

Flood Safety For Kids

Can You Find All The Words?

U J L D W T A W N S L D A K D
P E V A C T L Q H I O E D H N
K V T D N B G T H O A A V R U
D C K L R B B X L N Q R I W O
H B G H I B Q F E P S P S M R
C Z A D R G H O E K T J O Z G
K J D I K S F S J M B S R D R
Y A E P A G N I N R A W Y O E
T E R L R I V E R G C G Z O H
O C F C W E K M S B A C X L G
M N H H R K P G F P L A N F I
H T F J W E G A H Q E R X Y H
C N E D T B E A R T N X J R C
K K A P J Y A K G E I Z B O G
B T N O Y R P J D B T D I L S

Word Bank

Flood	Flash Flood	Creek
Watch	Warning	Advisory
Prepare	Plan	Higher Ground
River	Rain	TADD (Turn Around Don't Drown)

Flooding can happen many ways:

1. When rain continues to fall for several days
2. When very heavy/intense rain falls over a short period of time
3. When an ice or debris jam causes a river or stream to overflow into the surrounding area
4. If a levee or dam fails
5. If heavy snows melt faster than the soil can absorb it and the streams and rivers can carry it away
6. Storm Surge (Caused by hurricanes on the coast)

BEFORE A FLOOD:

- ✓ **Have a Communication Plan...** Whether it is having a specific person identified to contact for status updates, or a safe location to meet up with family members, having a plan in place will give you peace of mind if disaster does strike.
- ✓ **Assemble an Emergency Kit...** It is good practice to have enough food, water and supplies on hand at all times to last you and your family members at least 3 days in the case of an emergency. You should also have blankets, a light source, first aid kit, rubber boots, rubber gloves, and a battery-powered NOAA Weather Radio.
- ✓ **Know Your Risk...** Is your home or school in a floodplain? Where is water likely to collect on the roads you most often travel? What is the fastest way to get to higher ground? Knowing the answers to these questions ahead of time can save your life.



University of Kentucky
College of Agriculture,
Food and Environment
Cooperative Extension Service

WORD MATCH!

Can you draw a line to place the threat level with the correct definition?

1. Watch

A. Issued when flooding or flash flooding is imminent or occurring. **TAKE ACTION!**

2. Advisory

B. Issued when conditions are favorable for flooding. It does not mean that it will occur, but it is possible. **BE PREPARED!**

3. Warning

C. A flood/flash flood is not expected to be bad enough to issue a warning, but may cause significant inconvenience, and if you're not careful, it could lead to a situation that may threaten life or property. **BE AWARE!**

3 SIMPLE STEPS FOR FLASH FLOOD SAFETY

During a flood, water levels and the rate at which (how fast) the water is flowing can quickly change. Remain aware and monitor NOAA Weather Radio for any additional information.



weather.gov/flood

1 GET TO HIGHER GROUND

Get out of areas subject to flooding.

2 DO NOT DRIVE INTO WATER

Do NOT try to walk through or drive a horse through a flooded area! It only takes 6 inches of moving water to knock you off your feet.

3 STAY INFORMED

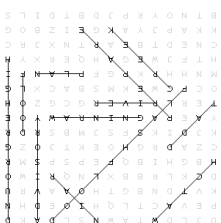
Monitor water levels. Listen to NOAA Weather Radio for additional forecast and guidance.

TRUE or FALSE

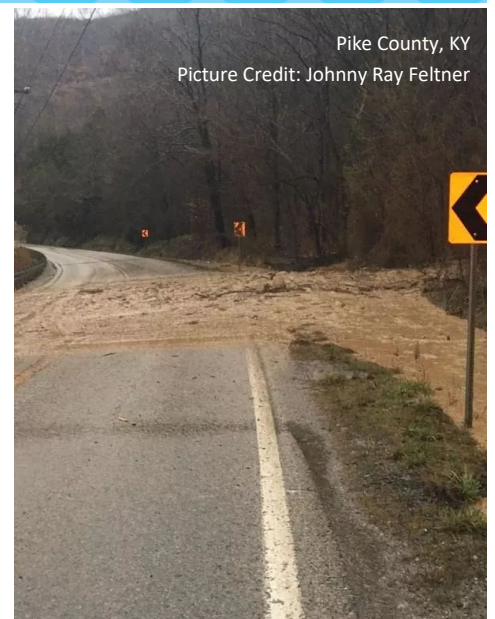
Circle the right answer

- If there is water flowing over the road it is safe to go through it. TRUE/FALSE
- Each year, more deaths occur due to flooding than any other thunderstorm-related hazard. TRUE/FALSE
- Flooding can happen in all parts of the country, all year long. TRUE/FALSE
- If flooding is ongoing, you want to head for lower ground. TRUE/FALSE

Answer Key:



True/False
1. False
2. True
3. True
4. False
Word Match
1-B
2-C
3-A



Pike County, KY
Picture Credit: Johnny Ray Feltner