

Winter Weather Safety

For Rural Communities



Winter can bring with it a wide variety of potentially dangerous weather. From impacting travel, outdoor activities, infrastructure and more, being prepared for any eventuality can bring you and your family some peace of mind this winter season.



5 Things to Know about Winter Weather Forecasts

Snow or ice totals can vary over short distances. A heavy snow band may form, dropping more snow in one location, while significantly less snow falls just a few miles away.

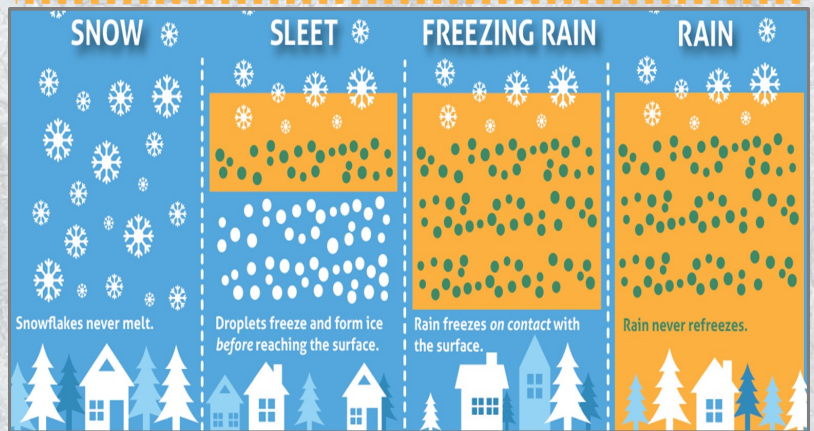
Focus more on the winter storm's impacts, rather than focusing too much on exact numbers.

Forecasts can change frequently. Forecasts may change as new model data becomes available. Always check for the latest information.

Rely on a dependable source for weather info. Choose your information sources wisely.

Know your winter weather terminology.

Will there be rain, ice or snow? The graphic below explains how having different layers of warm and cold air between the clouds and the ground determines the type of precipitation that hits the ground. (Blue = Below 32° F/Frozen precipitation; Orange = Above 32° F/Liquid precipitation)



A great way to keep ahead of a winter storm is with NOAA Weather Radio (NWR), a small battery powered receiver that provides continuous broadcasts of the latest weather information from the nearest National Weather Service office. NWR broadcasts official Weather Service warnings, watches, forecasts and other hazard information 24 hours a day, 7 days a week.



Winter Storm Watch

Issued when there is the potential for significant and hazardous winter weather usually within 48 hours.

Be Prepared!

Winter Weather Advisory

Issued for any amount of freezing rain and/or snow that is expected to cause a significant inconvenience, but not serious enough to warrant a warning.

Exercise Caution!

Winter Storm Warning

Issued when a significant combination of hazardous winter weather (freezing rain and/or snow) is occurring or imminent.

Take Action!



University of Kentucky
College of Agriculture,
Food and Environment
Cooperative Extension Service

Winter Weather Safety

For Rural Communities

Prepare! Don't Let a Winter Storm Take You by Surprise!

Before The Storm

Stock up on supplies such as:

- Candles, or a flashlight and batteries
- Battery powered NOAA Weather Radio
- Water and food, especially food that requires little preparation
- Extra medicine and first aid supplies
- Heating fuel
- Pet/livestock supplies

When preparing for an Ice Storm:

- Trim weak or damaged branches around the home
- Move items out from underneath trees

Concerning livestock...

Move animals to sheltered areas. Windbreaks, properly laid out and oriented, are better protection for cattle than confining shelters, such as sheds.

Haul extra feed to nearby feeding areas.

Have water available. Most animals die from dehydration in winter storms.

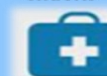
If traveling, prepare an emergency supply kit, including items like:



Water and snacks



Flashlight



First aid supplies



Snow shovel and brush



Warm clothes and blankets



Flares

During The Storm

To more efficiently conserve heat:

- Close off any rooms not in use
- Put towels or blankets in cracks under doors
- Keep blinds or curtains closed

If traveling:

- Let someone know where you are going and what time you expect to make your destination
- Keep an emergency supply kit packed
- Check conditions along the route
- Check the latest forecast

After The Storm

Check on your home and contact family and isolated neighbors

Stay informed on travel conditions and be aware of roadway hazards such as:

- Black ice, even if the roadway has been cleared of snow
- Potholes, which can be difficult to see and cause significant damage

